



GOOD MORNING
Have Good Trading Day

FRIDAY



Price is what you pay.
Value is what you get.

- Warren Buffet



MARKET PULSE

INDIAN INDICES

| NAME | CMP | NET CH. | % |
|--------|-------|---------|-------|
| SENSEX | 29927 | -46 | -0.16 |
| NIFTY | 9261 | -3 | -0.03 |

INDIAN ADR'S

| SYMBOL | CLOSE | GAIN/ LOSS % |
|-----------|-------|--------------|
| DRREDDY | 41.45 | -0.96 |
| HDFCBANK | 76.01 | +0.40 |
| ICICIBK | 8.61 | -0.35 |
| INFY | 15.36 | UNCH |
| TATAMOTOR | 35.82 | +1.19 |
| WIPRO | 10.06 | -0.79 |

FII AND MF ACTIVITY

| SYMBOL | In Crs. |
|-----------------------|---------|
| FIIs Eq (Provisional) | +142 |
| FIIs Index Future | -927 |
| FIIs Index Options | +300 |
| FIIs Stock Future | -168 |
| FIIs Stock Options | +177 |
| DIIs Eq (Provisional) | +205 |

CURRENCY

| | |
|------------|-------------|
| RBI RATE | 06-APR-2017 |
| RUPEE - \$ | 64.9791 |
| EURO | 69.3912 |
| YEN 100 | 58.7900 |
| GBP | 81.1524 |

MARKET PULSE

GLOBAL INDICES

| NAME | CMP | NET CH. | % |
|-----------|-------|---------|-------|
| DOW | 20662 | +14 | +0.07 |
| NASDAQ | 5878 | +14 | +0.25 |
| NIKKEI | 18593 | -5 | -0.03 |
| HANG SENG | 24022 | -251 | -1.04 |
| SGX NIFTY | 9218 | -48 | -0.53 |

WORLD COMMODITIES

| FUTURE | | |
|-------------|--------|---------|
| CRUDE | 52.89 | +1.18 |
| NATURAL GAS | 3.338 | +0.007 |
| GOLD | 1267.9 | +14.5 |
| SILVER | 18.430 | +0.184 |
| COPPER | 2.6645 | +0.0065 |

WORLD EVENTS

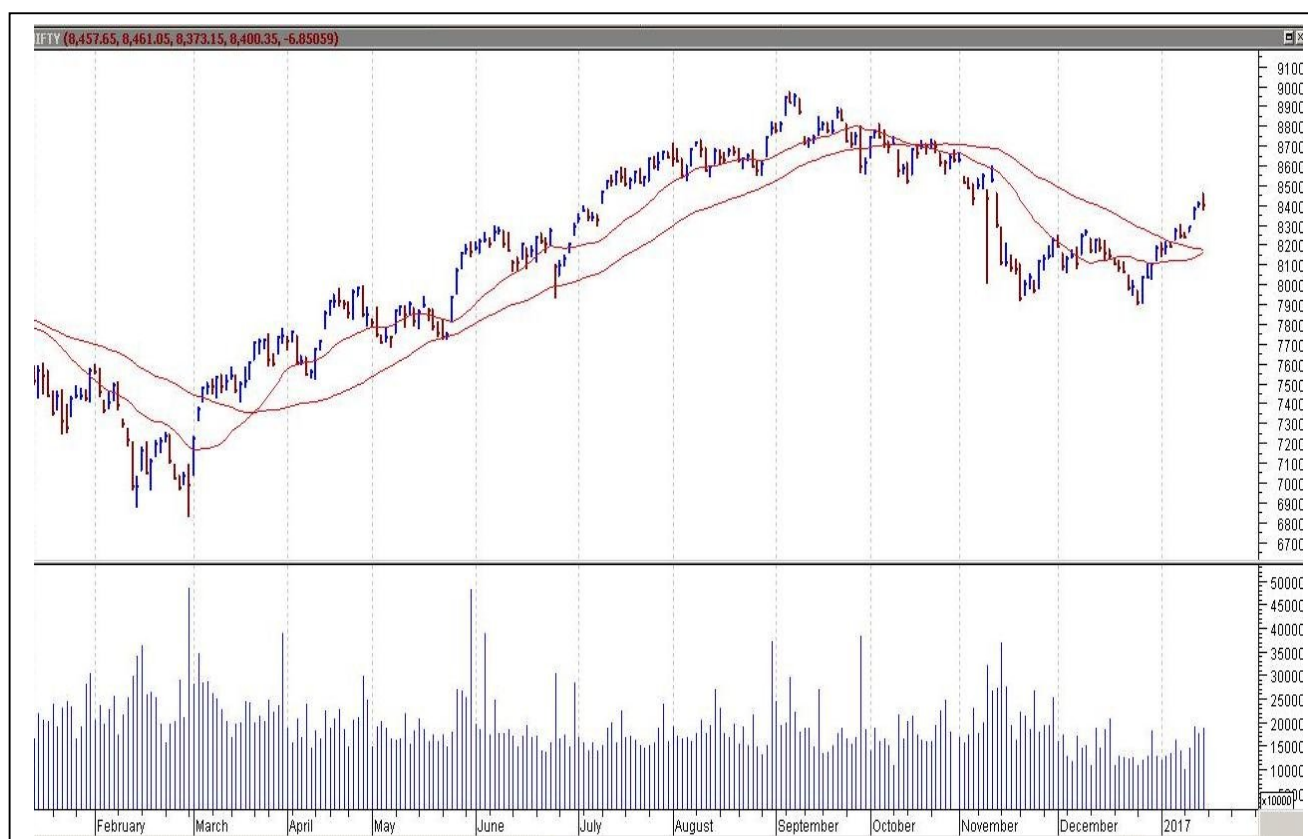
- US : Unemployment Rate
- UK: Manufacturing Production m/m

TOP STORY

- Unitech Promoter Case Trial Court Dismisses Bail Plea Of Unitech Promoters.
- Idea Launches Data Jackpot, Offers Upto 10GB Data/Month For First 3 Months.
- Dynamatic Technologies Signs Cooperation Agreement With Israel's Magal Security Systems.
- Avenue Supermarts - CRISIL upgrades rating from AA- to AA.
- Deepak Fertilisers subsidiary to acquire majority stake in Performance Chemiserve.
- Palred Technologies BM on 11 Apr to consider investment in subsidiaries.
- Cipla in Global pact with US company for muscle relaxant .
- Voltas eyes Videocon's home appliances brand kenstar.
- RBL Bank Opens IFSC Banking Unit At GIFT City.
- SMS Pharma: Increased Investment In VKT Pharma.
- GE Power gets order worth Rs237.6cr to supply CFB Boiler and Electrostatic Precipitator .



NIFTY CHART



MARKET COMMENTARY

Indian equity benchmarks showed smart recovery despite snapping the day in the negative territory as they managed to outclass most of the Asian and Europe peers by fat a margin. Sentiments got a boost after the Reserve Bank of India (RBI) projected India's growth to strengthen to 7.4% in 2017-18 from 6.7% in 2016-17. The central bank has maintained status quo on policy rate by leaving the repurchase rate (or repo rate) unchanged at 6.25% in its first bimonthly policy of FY18. However, it raised the reverse repo rate by 25 basis points to 6%. Further, RBI projected inflation to average around 4.5% in the first half of 2017-18 and 5% in the second half. Investors also got some confidence with Asian Development Bank's (ADB) report that India's growth rate will improve to 7.4% during 2017-18 and go up further to 7.6% in the next fiscal. For today's trade Nifty likely to trade in the range between 9235 - 9295.

MARKET LEVELS

| | CMP | SUPPORT LEVELS | | | | RESISTANCE LEVELS | | | |
|--------|-------|----------------|------|------|------|-------------------|------|-------|-------|
| NIFTY | 9261 | 9245 | 9225 | 9195 | 9185 | 9275 | 9285 | 9295 | 9315 |
| USDINR | 64.73 | 64.65 | 64.6 | 64.5 | 64.4 | 64.85 | 64.9 | 64.95 | 65.15 |



BULK DEALS (BSE)

| SCRIP | CLIENT NAME | BUY/SELL | QUANTITY | PRICE |
|-------|-------------|----------|----------|-------|
| | | | | |
| | | | | |
| | | | | |
| | | | | |
| | | | | |

BULK DEALS (NSE)

| SCRIP | CLIENT NAME | BUY/SELL | QUANTITY | PRICE |
|------------|--|----------|----------|--------|
| ANSALAPI | NOMURA SINGAPORE LIMITED | SELL | 905000 | 19.01 |
| BYKE | BLUE DIAMOND PLASTOWARE PRIVATE LIMITED | SELL | 325000 | 182.01 |
| BYKE | WASATCH ADVISORS INC A/C WASATCH EMERGING INDIA FUND | BUY | 689000 | 182 |
| JAYSREETEA | JSTI BENEFICIARY TRUST | SELL | 538866 | 115.35 |
| WEBELSOLAR | KARTHIKEYAN R | BUY | 420000 | 69.84 |

SCRIP'S IN F&O BAN

(To resume for normal trading below 80% of market wide limit required)

INFIBEAM ,IBREALEST, BHARATFIN

Initial Public Offering (IPO)

| Company Name | Security type | Issue Start Date | Issue End Date | Status |
|--------------|---------------|------------------|----------------|--------|
| | | | | |
| | | | | |



NIFTY 50 STOCKS: SUPPORT & RESISTANCE

| Symbol | Close | Support 1 | Support 2 | Pivot Point | Resistance1 | Resistance2 |
|-------------|-------|-----------|-----------|-------------|-------------|-------------|
| ACC | 1490 | 1467 | 1445 | 1481 | 1504 | 1517 |
| ADANI PORTS | 357 | 352 | 348 | 355 | 360 | 363 |
| AMBUJACEM | 243 | 238 | 233 | 242 | 247 | 251 |
| ASIANPAINT | 1087 | 1076 | 1065 | 1082 | 1093 | 1100 |
| AUROPHARMA | 670 | 667 | 664 | 671 | 674 | 678 |
| AXISBANK | 509 | 503 | 498 | 511 | 516 | 523 |
| BAJAJ-AUTO | 2806 | 2787 | 2767 | 2801 | 2821 | 2835 |
| BANKBARODA | 175 | 173 | 171 | 175 | 177 | 179 |
| BHARTIARTL | 342 | 339 | 335 | 341 | 344 | 346 |
| BHEL | 179 | 173 | 167 | 177 | 183 | 186 |
| BOSCH LTD | 22898 | 22729 | 22560 | 22839 | 23007 | 23117 |
| BPCL | 646 | 637 | 627 | 642 | 652 | 657 |
| CIPLA | 590 | 587 | 584 | 590 | 594 | 597 |
| COALINDIA | 286 | 285 | 283 | 287 | 289 | 291 |
| DRREDDY | 2718 | 2701 | 2684 | 2725 | 2742 | 2765 |
| EICHERMOT | 25596 | 25391 | 25186 | 25571 | 25776 | 25955 |
| GAIL | 387 | 382 | 377 | 385 | 390 | 393 |
| GRASIM | 1069 | 1060 | 1051 | 1067 | 1076 | 1083 |
| HCLTECH | 854 | 848 | 843 | 852 | 858 | 862 |
| HDFC | 1483 | 1470 | 1458 | 1480 | 1492 | 1502 |
| HDFCBANK | 1439 | 1428 | 1418 | 1436 | 1446 | 1453 |
| HEROMOTOCO | 3206 | 3181 | 3156 | 3200 | 3226 | 3245 |
| HINDALCO | 194 | 191 | 189 | 194 | 197 | 199 |
| HINDUNILVR | 935 | 925 | 915 | 931 | 940 | 946 |
| ICICIBANK | 281 | 279 | 277 | 281 | 283 | 286 |
| IDEA | 87 | 86 | 85 | 87 | 88 | 90 |
| INDUSINDBK | 1422 | 1404 | 1385 | 1415 | 1433 | 1444 |
| INFRA TEL | 339 | 329 | 320 | 335 | 345 | 350 |
| INFY | 1000 | 992 | 985 | 999 | 1006 | 1013 |
| ITC | 274 | 272 | 270 | 275 | 278 | 281 |
| KOTAKBANK | 894 | 886 | 878 | 892 | 900 | 906 |
| LT | 1683 | 1667 | 1652 | 1685 | 1701 | 1718 |
| LUPIN | 1448 | 1440 | 1431 | 1448 | 1457 | 1466 |
| M&M | 1289 | 1278 | 1267 | 1286 | 1297 | 1305 |
| MARUTI | 6292 | 6256 | 6220 | 6296 | 6332 | 6372 |
| NTPC | 168 | 166 | 164 | 167 | 169 | 170 |
| ONGC | 188 | 186 | 184 | 187 | 189 | 190 |
| POWERGRID | 197 | 194 | 191 | 196 | 199 | 201 |
| RELIANCE | 1439 | 1411 | 1383 | 1430 | 1458 | 1477 |
| SBIN | 293 | 290 | 288 | 294 | 296 | 300 |
| SUNPHARMA | 687 | 682 | 678 | 688 | 692 | 697 |
| TATAMOTORS | 473 | 470 | 466 | 474 | 478 | 482 |
| TATAMTRDVR | 286 | 283 | 280 | 285 | 288 | 290 |
| TATAPOWER | 87 | 87 | 86 | 87 | 88 | 89 |
| TATASTEEL | 502 | 489 | 476 | 497 | 509 | 517 |
| TCS | 2400 | 2392 | 2383 | 2401 | 2409 | 2418 |
| TECHM | 447 | 443 | 438 | 446 | 450 | 453 |
| ULTRACEMCO | 4111 | 4048 | 3984 | 4098 | 4162 | 4212 |
| WIPRO | 515 | 509 | 503 | 512 | 518 | 521 |
| YESBANK | 1565 | 1555 | 1546 | 1565 | 1575 | 1585 |
| ZEEL | 553 | 543 | 533 | 549 | 559 | 565 |



CORPORATE ACTION / BOARD MEETINGS

NSE Download Ref.No.: NSE/CML/34561: Listing of Equity Shares of NagarjunaAgrichem Limited (New Listing). This circular shall be effective from April 07, 2017.

NSE Download Ref. No.: NSE/CML/34575: Listing of Equity Shares of Anjani Portland Cement Limited (New Listing).Symbol- APCL. This circular shall be effective from April 10, 2017.

NSE Download Ref. No.: NSE/CML/34577: Listing of Equity Shares of Poddar Housing and Development Limited (New Listing).Symbol-PODDARHOUS. This circular shall be effective from April 10, 2017.

BOARD MEETINGS

| COMPANY NAME | DATE | PURPOSE |
|--------------|-----------|---|
| VBL | 7-Apr-17 | Annual General Meeting |
| MINDTREE | 7-Apr-17 | Interim Dividend Rs 2/- Per Share (Purpose Revised) |
| VSSL | 7-Apr-17 | Rights 2:3 @ Premium Rs 40/- |
| LINDEINDIA | 7-Apr-17 | Annual General Meeting/Dividend Re 0.75 Per Share |
| COLPAL | 10-Apr-17 | Interim Dividend Rs 3/- Per Share (Record Date Revised) |
| MOLDTKPAC | 10-Apr-17 | Interim Dividend Rs 2/- Per Share (Purpose Revised) |
| VEDL | 11-Apr-17 | Interim Dividend Rs 17.70 Per Share |
| INDNIPPON | 11-Apr-17 | Interim Dividend Rs 6/- Per Share |
| KSBPUMPS | 12-Apr-17 | Annual General Meeting/Dividend - Rs 5.50 Per Share |
| FAGBEARING | 12-Apr-17 | Dividend - Rs 12/- Per Share |
| OFSS | 19-Apr-17 | Interim Dividend Rs 170 Per Share |
| MAHINDCIE | 19-Apr-17 | Annual General Meeting |
| FOSECOIND | 20-Apr-17 | Dividend - Rs 7/- Per Share |
| SANOFI | 25-Apr-17 | Annual General Meeting/Dividend Rs 50/- Per Share |
| RAIN | 26-Apr-17 | Annual General Meeting |
| | | |
| | | |
| | | |
| | | |
| | | |
| | | |
| | | |
| | | |

NEWS & RUMOURS:

- Gold (Spot Dollar) major support = \$1215/\$1179 & Resistance = \$1276/\$1330.
- Crude oil range->\$47 to \$57.
- Stocks, Dollar Rise as Bonds Fall amid Policy Bets: Markets Wrap: - Investors turned attention to Washington to gauge the prospects for sweeping policy changes a day after the Federal Reserve roiled markets with talk of shrinking its balance sheet.
- Dollar index trims gains, holds steady in subdued trade: - The dollar trimmed gains against other major currencies in subdued trade on Thursday, as investors remained cautious ahead of a U.S.-China summit scheduled later in the day.
- U.S. natural gas extends gains after weekly storage data: - U.S. natural gas futures edged higher on Thursday, extending gains after data showed that natural gas supplies in storage in the U.S. rose less than expected last week. The U.S. Energy Information Administration said in its weekly report that natural gas storage in the U.S. [rose by 2 billion cubic feet](#) in the week ended March 31, compared to forecasts for a build of 7 billion.
- Oil recovers as traders weigh U.S. stockpiles, OPEC cuts: - Oil prices edged higher during U.S. morning hours on Thursday, [reversing overnight losses](#) as the market weighed rising U.S. drilling and record stockpiles against efforts by major producers to cut output to reduce a global glut.
- Gold ticks up ahead of Trump-Xi summit; Fed outlook in focus: - Gold prices ticked up in U.S. trading on Thursday, as investors stayed cautious ahead of an upcoming meeting between U.S. President Donald Trump and Chinese President Xi Jinping.

TRENDS & OUTLOOK – DATE: 7-Apr- 2017

PRECIOUS METALS:

| COMMDITY (MCX) | S2 | S1 | PIVOT POINT | R1 | R2 |
|----------------|-------|-------|-------------|-------|-------|
| GOLD (June) | 28230 | 28490 | 28770 | 29199 | 29475 |
| SILVER (May) | 39600 | 41000 | 42160 | 43200 | 44820 |

BASE METALS

| COMMDITY (MCX) | S2 | S1 | PIVOT POINT | R1 | R2 |
|----------------|--------|--------|-------------|--------|--------|
| COPPER (Apr) | 369 | 374 | 382 | 387 | 392 |
| ZINC (APR) | 167.45 | 171.25 | 176.55 | 182.50 | 186.55 |
| LEAD (Apr) | 141.55 | 145.50 | 149.25 | 153.45 | 157.25 |
| NICKEL (Apr) | 612 | 630 | 657 | 675 | 691 |

ENERGY

| COMMDITY (MCX) | S2 | S1 | PIVOT POINT | R1 | R2 |
|-------------------|------|------|-------------|------|------|
| CRUDE OIL (Apr) | 3120 | 3220 | 3325 | 3445 | 3565 |
| NATURAL GAS (Apr) | 201 | 207 | 212 | 219 | 225 |

DATA TALKS : TODAY'S ECONOMIC DATA :

Manufacturing Production m/m of GBP, BOE Gov Carney Speaks, Average Hourly Earnings m/m, Non-Farm Employment Change, Unemployment Rate, Final Wholesale Inventories m/m, FOMC Member Dudley Speaks.



LET THE
**WOMAN
POWER RISE**

**WOMEN
DESK**

All the Ladies in the house are
cordially invited to come
& explore their trading talents.

TOLL FREE: 18001030059



Registered Office

Indira House, 3rd Floor, 5 Topiwala Lane,
Opp. Lemington Road Police Station, Grant Road (East), Mumbai - 400007.

Corporate Office

'Ramavat House' E-15, Saket Nagar, Indore - 452018 (M.P.)

Customer Care

Tel: +91-731-4097170/ 71/ 72/ 73/ 74 M. +91 93031 72345

Email: customercare@indiratrade.com www.indiratrade.com



INSTITUTIONAL DEALING UNIT

Africa House, 5, Topiwalla Lane, Lamington Road, Mumbai, 400007

Tel: +91 22 30080678 Fax : +91 22 23870767 Email : ie@indiratrade.com

Disclaimer

This report is for private circulation within the Indira Group. This report is strictly confidential and for information of the selected recipient only and may not be altered in any way, transmitted to, copied or distributed, in part or in whole, to any other person or to the media or reproduced in any form. This report should not be construed as an offer or solicitation to buy or sell any securities or any interest in securities. It does not constitute a personal recommendation or take into account the particular investment objectives, financial situations, or any such factor. The information, opinions estimates and forecasts contained here have been obtained from, or are based upon, sources we believe to be reliable, but no representation of warranty, express or implied, is made by us to their accuracy or completeness. Opinions expressed are our current opinions as of the date appearing on this material only and are subject to change without notice.